

Name: \_\_\_\_\_

Date: \_\_\_\_\_



## Discount Price

1) In a department store, a \$40 dress is marked, "Save 25%." What is the discount?  
What is the sale price of the dress?



$$\frac{\quad}{\$ \text{ Cost}} \times \frac{\quad}{\% \text{ Discount}} = \frac{\quad}{\$ \text{ Discount}}$$

$$\frac{\quad}{\$ \text{ Cost}} - \frac{\quad}{\$ \text{ Discount}} = \frac{\quad}{\$ \text{ Sale Price}}$$

2) In a grocery store, a \$12 case of soda is labeled, "Get a 20% discount."  
What is the discount? What is the sale price of the case of soda?



$$\frac{\quad}{\$ \text{ Cost}} \times \frac{\quad}{\% \text{ Discount}} = \frac{\quad}{\$ \text{ Discount}}$$

$$\frac{\quad}{\$ \text{ Cost}} - \frac{\quad}{\$ \text{ Discount}} = \frac{\quad}{\$ \text{ Sale Price}}$$

3) In a candy store, a \$5.00 jar of candy is labeled, "50% off." What is the discount?  
What is the sale price of the jar of candy?



$$\frac{\text{_____}}{\$ \text{ Cost}} \times \frac{\text{_____}}{\% \text{ Discount}} = \frac{\text{_____}}{\$ \text{ Discount}}$$

$$\frac{\text{_____}}{\$ \text{ Cost}} - \frac{\text{_____}}{\$ \text{ Discount}} = \frac{\text{_____}}{\$ \text{ Sale Price}}$$

4) In a bicycle store, a \$500 bicycle is marked, "Get a 30% discount." What is the sale price of the bicycle?



$$\frac{\text{_____}}{\$ \text{ Cost}} \times \frac{\text{_____}}{\% \text{ Discount}} = \frac{\text{_____}}{\$ \text{ Discount}}$$

$$\frac{\text{_____}}{\$ \text{ Cost}} - \frac{\text{_____}}{\$ \text{ Discount}} = \frac{\text{_____}}{\$ \text{ Sale Price}}$$

Name: \_\_\_\_\_

Date: \_\_\_\_\_



## Sales Tax

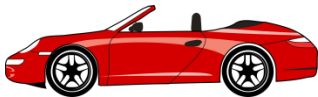
- 5) If the sales tax rate is 7.25% in California, then how much would you pay in Los Angeles for a pair of shoes that cost \$39.00?



$$\frac{\text{_____}}{\$ \text{ Cost}} \times \frac{\text{_____}}{\% \text{ Tax}} = \frac{\text{_____}}{\$ \text{ Tax}}$$

$$\frac{\text{_____}}{\$ \text{ Cost}} + \frac{\text{_____}}{\$ \text{ Tax}} = \frac{\text{_____}}{\$ \text{ Total Price}}$$

- 6) The price of a new car is \$29,990. If the sales tax rate is 6.5%, then how much sales tax is being charged? What is the total cost for the car including tax?



$$\frac{\text{_____}}{\$ \text{ Cost}} \times \frac{\text{_____}}{\% \text{ Tax}} = \frac{\text{_____}}{\$ \text{ Tax}}$$

$$\frac{\text{_____}}{\$ \text{ Cost}} + \frac{\text{_____}}{\$ \text{ Tax}} = \frac{\text{_____}}{\$ \text{ Total Price}}$$

- 7) If the sales tax rate is 7.375% in New York State, then how much sales tax would you pay in Albany for a \$34 pair of pants?



$$\frac{\text{_____}}{\$ \text{ Cost}} \times \frac{\text{_____}}{\% \text{ Tax}} = \frac{\text{_____}}{\$ \text{ Tax}}$$

$$\frac{\text{_____}}{\$ \text{ Cost}} + \frac{\text{_____}}{\$ \text{ Tax}} = \frac{\text{_____}}{\$ \text{ Total Price}}$$

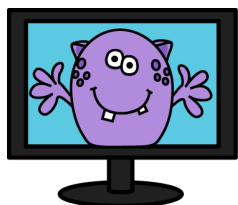
Name: \_\_\_\_\_

Date: \_\_\_\_\_



## Sale Price and Tax

- 8) At best buy they have a 42" TV that sells for \$1250 and is on sale for 15% and sales tax is 6.5%. What is the final cost?



- 9) If your cell phone bill was \$67.82 and there is a 7.5% late fee, how much will your bill be?



- 10) If you go out to eat with 3 friends and your meal was \$72.50, there is 6.75% sales tax and you should tip the waiter 15%. How much should each person pay?

